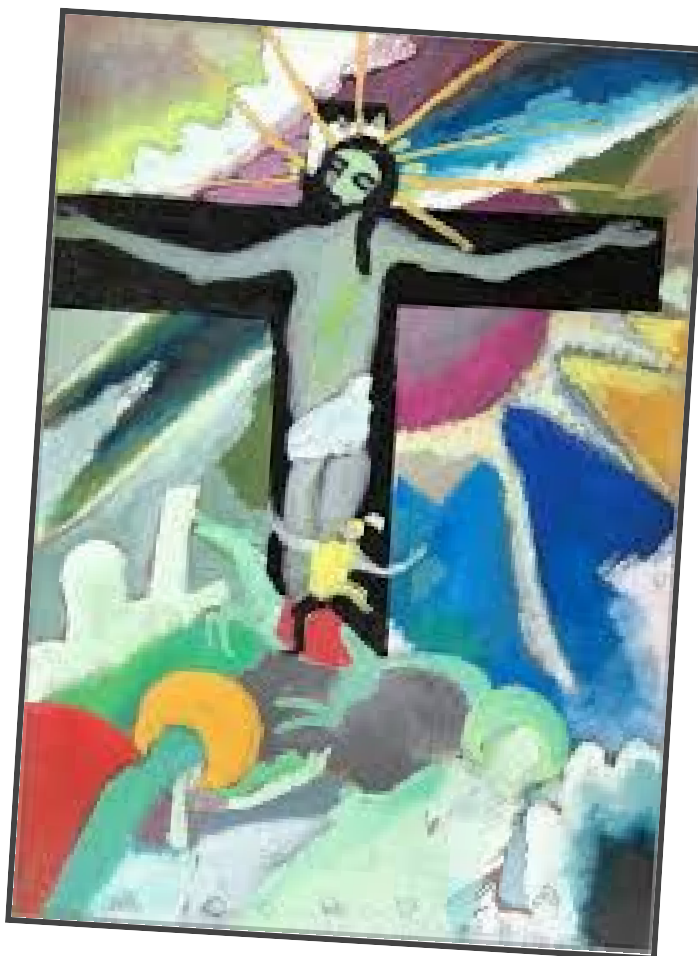


## OUR PRAYER

*I said to Jesus,  
'People pray in many ways,  
bowing, crossing, singing, kneeling,  
standing, silently or aloud,  
set prayers or spontaneous.  
Which way is the best of all?'  
'It's the heart that counts, said Jesus,  
not the style that makes your prayer look  
good.  
Use simple words; have huge desires,  
and shape your life to fit your prayers.  
When asking God to forgive your sins,  
first check the list of those you hate  
and let your anger go. Then pray:  
say what you mean; mean what you say'.*



## FROM THE PRINCIPAL

Dear Parents and Carers,



  
**Leadership**  
is about the  
**choices**  
you make.

The graphic features several colorful gears with the following text: 'team work', 'try your best', 'speak up', 'positive', 'show the way', and 'respect'. Below the gears are three stylized human figures holding hands.

### Developing Active Citizens

Our focus for all children, from Foundation to Year 6, is developing their capacities to actively participate and positively influence their community. Through learning *Civics and Citizenship*, the children explore and develop their understanding of how people participate in their community as active citizens and the factors that shape a person's identity and sense of belonging.

We want all children at Good Samaritan to flourish now and into the future as informed and optimistic adults. Therefore, we work with you to support your child's

development of a strong sense of identity and a conviction that they can **make a difference in the world**. This way inspired by the Gospel and led by the Holy Spirit, each will be empowered to act for justice and the common good.

Last Wednesday the children in Year 6 received their special jacket, what we call their **Jacket of Choices**. At Good Samaritan this is a 'big deal' as we hold high expectations for our Year 6 children. Their 'Jacket of Choices' is an important symbol; it represents the special responsibility each Year 6 child has within our school.

We expect that on a daily basis, each Year 6 child will actively demonstrate, promote and encourage involvement in creating a positive whole school community. Each Year 6 is therefore a role model for every other child at Good Samaritan; they are the example of what it means to be a good citizen at school. By holding high expectations and providing rich learning experiences we are developing the children's ability to lead with respect and compassion while they build community, personally flourish and act in a positive and socially responsible manner.

## Updated COVIDSafe Settings

It's reassuring that we are now operating at a lower level of COVID restrictions. While everyone wants to get back to normal as quickly as possible, we also need to stay safe by practicing COVIDSafe behaviours and getting tested. This is especially important as we see friends and family, celebrate together, travel together and move around. Coronavirus is still present in Victoria and we must all be vigilant and play our part to reduce the spread.

In the current level of COVIDSafe settings you must carry a face mask with you at all times when you leave the home, unless you have a lawful reason not to. It is strongly recommended you wear a face mask when you cannot maintain 1.5 metres distance from other people (such as in the school yard when dropping off or picking up your child, at a busy bus stop or train station platform). An updated version of the school's COVIDSafe Guidelines for Families is included with this bulletin.

The School recently received a visit from a DHHS Infection Control Nurse who met with me to review the COVIDSafe infection control measures that we have in place. This visit is part of a statewide initiative to support all Victorian schools to effectively manage infection control. You can be assured that at Good Samaritan we have excellent controls in place for which we were highly commended.

For a full description of Victoria's COVIDSafe Settings please visit: <https://www.coronavirus.vic.gov.au/how-we-live>

## Some Welcome Additions



Last week the first set of new outdoor table settings arrived. A total of seven of these settings will be added to the school yard outside of the Emmaus Learning Village. These settings provide the teachers and children with another outdoor learning space, while also providing an additional shaded area during recess and lunch breaks.

Also, as part of our continued efforts to ensure the children's wellbeing, this week 4 additional sinks were installed in locations across the school. These provide the children with increased access to water to fill their water bottles, as well as additional locations for hand washing.



We have been able to purchase these items due to the wonderful fundraising efforts of the Parents & Friends Association in 2019. Without your generous support we could not have done this.

### Car Park Safety

I ask that everyone pays increased attention to driving safely in the car park. This is particularly important at the busy drop-off and pick up times.

Please ensure that when driving through the carpark that you:

- **GO SLOW** - no more than 5kmh.
- **DO NOT PARK IN NO-STANDING AREAS.** This is particularly important near the yellow poles at the front of the school office building. This space must be kept clear at all times as it is an emergency exit point.
- **FOLLOW THE DIRECTIONS OF THE CROSSING SUPERVISORS.** They are there to keep your and every other family safe.
- **BE PATIENT!**

Your continued cooperation will keep all the children safe.


God bless,

PAUL SEDUNARY  
Principal

## SCHOOL NEWS

### Coming Up This Term

Week Beginning	Monday	Tuesday	Wednesday	Thursday	Friday
<b>Monday 8 March</b> A		<b>7:00pm First Reconciliation Family Workshop</b>	<b>Year 5 Mt Evelyn Camp</b>	<b>Year 5 Mt Evelyn Camp</b>	<b>Year 5 Mt Evelyn Camp</b>  2.30pm School Assembly
<b>Monday 15 March</b> B	<b>Year 6 Phillip Island Camp</b>	<b>Year 6 Phillip Island Camp</b>	<b>Year 6 Phillip Island Camp</b>  9.15am Helping Hands Workshop 2.00pm Helping Hands Workshop		2.30pm School Assembly

Monday 22 March  A				7:00pm Celebration of First Reconciliation	 SCHOOL PHOTOS Children must wear full school uniform
Monday 29 March  B	2.30pm School Assembly			LAST DAY OF TERM 1	GOOD FRIDAY

## School Uniform

Now that we are back into the routine of school, it is important that all children are wearing the correct school uniform.

A few reminders:

1. All children attending Good Samaritan are required to wear the correct school uniform.
2. To ensure comfort and that the uniform meets a diverse range of needs, the children have a number of options for their daily wear.
3. All items of clothing, including shoes, should be clearly named.
4. The old dark green polo top and jacket may no longer be worn.
5. Grade 6 students are permitted to wear the Year 6 jacket throughout the year.
6. School shoes must be **totally black** in colour - no other colour is to be visible. Here are a few examples of acceptable school shoes:



## 2021 First Eucharist and Confirmation Sacramental Programs



This year's Parish Sacramental Program will take place as follows:

### **First Eucharist**

The Sacrament of First Eucharist will be held at 12.00pm on Saturday, 5 June at Our Lady's Church, Craigieburn

This year the First Eucharist program will be open to children in years 4 and 5. Details regarding the program will be sent home at the commencement of term 2.

### **Confirmation**

The Sacrament of Confirmation will be held on Sunday, 28 August at Kolbe College.

Details regarding the Confirmation program will be sent home at the commencement of term 3.



For more parish news visit  
<https://www.our-ladys.org/>

## OUR LADY'S PARISH MASS TIMES

Saturday	9:15am	Our Lady's Craigieburn
	6:30 pm	Our Lady's Craigieburn
Sunday	8:00am	Our Lady's Craigieburn
	9:30am	Good Samaritan
	11:00am	Our Lady's Craigieburn
	6:00pm	Our Lady's Craigieburn
Monday	No Masses	
Tuesday	9:15am	Our Lady's Craigieburn
Wednesday	7:00pm	Good Samaritan
Thursday	9:15am	Our Lady's Craigieburn
Friday	9:15am	Our Lady's Craigieburn
1st Friday	7:00pm	Our Lady's Craigieburn

### Reconciliation

Saturday	10:15am	Our Lady's Craigieburn
----------	---------	------------------------

## 2021 Registrations now open



Craigieburn  
Auskick

**Register now at [www.playafl.com.au](http://www.playafl.com.au)**

**Select Craigieburn as your center**

**Where: Highgate recreation reserve oval #2**

**When: Saturday mornings starting 20th March**

**Time: 9:00 am to 10:30am**

**Coordinator Shane Ryan 0417262557 or email**

**[auskickcraigieburn@gmail.com](mailto:auskickcraigieburn@gmail.com)**

**\$96**

**Ages 5-12yrs child must be turning 5 in 2021**

## COVIDSafe GUIDELINES FOR FAMILIES

(updated 26 February)



The following directions detail the measures that have been put in place to protect the health and wellbeing of all members of our school community.

They reflect the current health advice provided by the Department of Health and Human Services and the Catholic Education Commission of Victoria.

These guidelines will change from time-to-time to ensure they reflect the most current advice provided by Victoria's Chief Health Officer.

### SICK OR UNWELL CHILDREN



**STAY HOME**  
If you are unwell

If your child is ill or is feeling unwell, **they must not attend school.**

Unwell children must remain home and seek medical advice if required.

Any child who presents at school as either sick or unwell, no matter how mild their symptoms, will be sent home.

### VISITING THE SCHOOL OFFICE OR LEARNING VILLAGES

If you need to visit the School for any reason please:



Carry a face mask *(you may be asked to wear it)*



Sanitise your hands upon arrival



Keep your distance - stay 1.5m apart



Register your attendance

## MORNING DROP-OFF



The school gates are opened at 8.30am

**Children must not be dropped at school prior to 8.30am.**

Any child who arrives at school prior to 8.30 will be sent to before school care and the child's family will be charged the full session amount.

Parents and family members are now permitted to enter the school grounds and go to classrooms - **face masks should be carried at all times.**

**Keep your distance** – stay 1.5 metres away from people where you can.

## AFTERNOON PICK-UP



The school gates will open at 3.10pm.

Parents and family members are permitted to enter the school grounds and go to classrooms - **face masks should be carried at all times.**

**Keep your distance** – stay 1.5 metres away from people where you can.

Avoid gathering in groups while waiting for your child.

## DRINK BOTTLES

**Every child must have a water bottle** to use throughout the day at school. Due to covid safe health measures, the drinking fountains in the school yard have been turned off.

**Drink bottles need to be clearly marked with your child's name and grade.**

School drink bottles are available for purchase from the School Office. The cost of a bottle is \$5.00.

## WASHING AND SANITISING HANDS

The children will be required to wash/sanitise their hands:

- Upon every entry to the classroom (for example: at the start of the day, after going to the toilet, after delivering or collecting the office tub).
- After each specialist class.
- After each activity where shared equipment (eg: blocks, counters, scissors etc) has been used.

The children will be supervised by a member of staff when they wash/sanitise their hands to ensure it is done correctly.

Hand sanitiser and antibacterial wipes are available in all learning areas and office spaces.

Parents/carers are encouraged to supply their child with a small bottle of hand sanitiser (50ml) for their personal use.



## TESTING SITES

You and your children can get tested for coronavirus (COVID-19) at either of the following nearby locations:

<b>Roxburgh Park Youth and Recreation Centre</b>	75 Lakeside Drive Roxburgh Park	Open Monday - Sunday 9am-5pm.
<b>Northern Health - Craigieburn Centre</b>	274-304 Craigieburn Road Craigieburn	Open Monday - Sunday 9am-7.30pm



---

For daily updates from the Department of Health and Human Services, visit: [Coronavirus \(COVID-19\) updates](#)

---